



Sevenstar Contest Meeting 2023

Contest Meeting 2023, regatta open to Contest yachts, Real Club Nautico de Palma on Thursday 28th till Saturday 30th September 2023

SAILING INSTRUCTIONS

In all the rules governing this event [NP] denotes a rule that shall not be grounds for protest by a boat. This changes RRS 60.1 (a).

1. RULES

- 1.1 The regatta will be governed by the rules as defined in the Racing Rules of Sailing 2021 –2024 (RRS).
- 1.2 [NP][DP] All competitors and staff shall follow any reasonable instruction given by a race committee official or a member of the Organising Authority.

2. NOTICES TO COMPETITORS & CHANGES TO SAILING INSTRUCTIONS.

- 2.1 Notices to competitors will be posted on the Official Notice Board (ONB) located on the official website of the event: <https://www.cyberaltura.com/default/020/index.php?cl=933> and to receive the information, you have to record the race committee number **+34 675 943171** in your devices and with a diffusion list through WhatsApp you will receive any information that is issued for the event.
- 2.2 The Race office will be allocated at the Sala Ponent, first floor main building.
- 2.3 [NP][DP] All boats shall be equipped with a Marine VHF transceiver capable of operating with the channels established for the regatta and at least one device connected to internet and to the APP WhatsApp.
- 2.4 Any change to the sailing instructions will be posted on the Official Notice Board two hours before the warning signal on the day it will take effect, except that any change to the schedule of races will be posted before 20.00 hours on the day before it will take effect.
- 2.5 At sea, the race committee will broadcast and receive on the 69 VHF channel.

3. SIGNALS MADE ASHORE

- 3.1 Signals made ashore will be displayed on the Main Flag Pole (MFP) located on the main terrace of the Club house by the swimming pool.
- 3.2 When code flag “AP” is displayed ashore, the words “1 minute” are replaced with ‘*not less than 60 minutes*’ in the race signal AP. This changes RRS Race Signals, AP.



4. SCHEDULE OF RACES, AREA ASSIGNMENT AND COMPETITION FORMAT

4.1 The intended programme and schedule of races is set out below, but the Race Committee reserves the right to change the schedule at its discretion, taking into account weather conditions or all other factors which may impact the fairness of the event and in accordance with S.I. 2.4

DATE	TIME	
28/09/2023	From 17:00 to 18:30	Registration and competitors confirmation.
29/09/2023	11.30 h	Warning signal First race of the day Races Windward/leeward courses
30/09/2023	11.30 h	Warning signal Coastal course

3 races are programmed and at least one must be completed for the event to be valid. No more than 2 windward/leeward races or one coastal race will be sailed per day.

On Friday 29th and Saturday 30th September, a briefing will be held at 09.30 AM. Max. 2 members of each boat will be presented.

The warning signal for a subsequent race on the same day, will be given as soon as possible. To alert boats that a race or sequence of races will begin soon, the orange starting line flag will be displayed with one sound at least 5 minutes before a warning signal is made.

The Race Committee will try to broadcast by VHF its intention to sail another race. A failure in the emission or reception of the broadcasting will not be grounds for redress. (This changes RRS 62.1 a).

On the 30/09/2023, no warning signal will be made after 15.30 hours.

5. RACING AREAS.

Races will be sailed in Palma Bay waters. Approximate position of centre is as follows

POSITION
39° 31,846 N- 002° 40,233 E

6. COURSES & SHORTENED COURSES.

- 6.1 **Windward/leeward courses:** Appendix 1 shows the courses, including the course signals, the order in which the marks are to be passed or rounded, and the side on which each mark is to be left.
- 6.2 The leeward gate may be substituted by a single mark in this case the mark is to be left to port. This mark is not considered as a gate and RRS 18.4 applies.

- 6.3 **Coastal courses:** Appendix 2 shows the courses, including the marks definitions.
- 6.4 The position of the marks in Appendix 1 and 2 are approximate. A different distance of the leg or bearing shall not be grounds for a request for redress. Nevertheless, in the previous and to the effects of the corrected time, the marks' real position will be considered when calculating the distance of the legs. (This changes RRS 62.1(a)).
- 6.5 No later than the warning signal the Race Committee will signal the course number (by displaying the corresponding numeral pennant) and the magnetic bearing and length of the first leg and will broadcast this information via VHF. Omission or failure in the emission or reception of that communication shall not be ground for a request for redress. (This changes RRS 62.1(a))
- 6.6 **SHORTENED COURSES:** Races may be shortened at any mark, except for the windward/leeward races, these shall have a minimum of 3 legs completed (two upwind and one downwind), excluding the leg from mark 1 the offset of each course. The time limit remains the same as for the original course.

7. MARKS

7.1 Windward/leeward courses:

Marks 1A, Offset A 2G	New mark	Starting marks	Finish marks
Inflatable yellow	Inflatable orange	RC vessel and pin end boat or inflatable Red mark	RC vessel and a Buoy with a blue flag

7.2 Coastal courses:

Course marks	*Offset mark	Starting mark	Finish mark
See Appendix 2	Orange	RC vessel and pin end boat or inflatable Red mark	RC vessel and a Buoy with a blue flag

* **Offset mark:** if the committee displays a green or red flag before or together with the warning signal, this means that after passing the starting mark, yachts shall leave the windward mark either to starboard or port respectively, The Race Committee will show the bearing and distance to the mark.

8. HANDICAPS, THE START; CLASSES AND CLASS FLAGS

- 8.1 The handicaps (TCF: Time Correction Factor) will be determined by the race committee. This will be done on the basis of the expected speed of the boat and will be no ground for a request for redress. This changes RRS 60.1.
- 8.2 The starting line will be between the staff on the Race Committee boat at the starboard end of the line and the staff on the pin boat or an inflatable RED mark on the port end, both staff displaying an orange flag.
- 8.3 A boat starting later than four minutes after her starting signal will be scored did not start (DNS) without a hearing. This changes RRS A4 and A5.1.
- 8.4 In addition to RRS 29.1 & 29.2 individual and general recalls may be communicated by radio VHF. In such case, bow numbers, sail numbers or boat names may be called out for their identification. Delay in the radio communication of these calls, or the order in which they are made, or any omission or failure in the emission or reception of these, shall not be grounds for a request for redress. (This changes RRS 62.1(a)). This rule does not reduce, modify or exonerate each boat's responsibility to start in accordance with the RRS.

9. CHANGE OF POSITION OF THE NEW MARK AND CHANGE OF DISTANCE OF THE NEW LEG.

- 9.1 To change the next leg of the course, the race committee a) will lay a new mark, b) move the leeward gate or c) move the finish line. In case a new mark has been laid, the original one will be removed as soon as practicable.
- 9.2 In case of a change of course, to windward, the Offset mark will not be set.
- 9.3 Any change at the leeward gate or at the finish line will be announced at the offset mark.

Coastal races:

- 9.4 A Race Committee boat close to a mark that has to be rounded, displays code flag C and makes repeated sound signals, this means that after rounding the mark: "all boats shall sail straight to the finishing line to finish, ignoring any the course marks not rounded yet". (this changes RRS 28 and 33).

10. THE FINISHING LINE.

- 10.1 The finishing line will be between a staff on board the Race Committee boat and a buoy, both displaying a blue flag.
- 10.2 **[NP][DP]** When crossing the finishing line after the sunset, or in poor visibility conditions, every boat shall highlight her sail number or bow number with a powerful torch and shall identify herself to the race committee by radio VHF until it has been recognized.

11. PENALTIES.

RRS 44.1 is changed so that only one turn is required instead of two turns.

12. TIME LIMIT

All boats, within the racing class on the short race failing to finish within 45 minutes after the first boat of its group will be scored Did Not Finish (DNF).
The race committee may extend the time limits if, to her opinion, special circumstances justify that decision. This will be no ground for requests for redress. This changes RRS 35 and A4.1.

13. BOAT THAT RETIRES (RET), ABANDONS (DNF) OR DOES NOT SAIL THE STARTING LINE (DNC). **[NP][DP]**

- 13.1 A boat that retires (RET) shall lodge a retirement form at the race office within the protest time limit.
- 13.2 A boat that abandons the racing area (DNF) at any moment shall inform the race committee by any means and shall inform the race office within the protest time limit.
- 13.3A boat that does not leave the harbour and does not sail to the starting line for the races of the day (DNC) shall inform the Race Office as soon as possible.

14. HEARING REQUESTS.

- 14.1 Hearing request forms are available on the virtual race office. Protests and requests for redress or reopening shall be delivered there within the appropriate time limit.
https://www.racingrulesofsailing.org/protests/new?event_id=2863
- 14.2 Protest time limits for each class are as follows:
90 minutes after the protesting boat finishes or the race committee signals no more racing today, whichever is later.
- 14.3 Notices will be posted no later than 30 minutes after the end of the protest time limit, to inform competitors of hearings in which they are parties or named as witnesses. Hearings will be held in the Jury rooms and implicated parties will have to remain available.
- 14.4 For the purpose of RRS 64.4 (b) the authority is the RFEV Race Officials Committee.

15. SAFETY REGULATIONS.

- 15.1 Boats must be equipped with a VHF radio transceiver of at least 25 watts of power. The following channels, as a minimum requirement, are mandatory: 9, **16**, and the course area assigned channel
- 15.2 While racing, only crew members appearing on the crew list provided by the boat during registration or any authorized change thereafter, shall be carried on board.
- 15.3 All boats shall only return to their allocated moorings.
- 15.4 Boats arriving for any reason at a point ashore other than the ones or that cannot reach the harbour on their own are requested to report immediately to:
- | | | |
|------------------------------|----------------------------|--------|
| ➤ Real Club Náutico de Palma | Telephone: 00 34 971726848 | VHF 9 |
| Race Committee | Telephone 00 34 675943171 | VHF 69 |
- 15.5 To facilitate the evacuation of an injured crew member, boats are requested to signal their position to the rescue services by using an orange smoke canister or a red or white hand flare.
- 15.6 All competitors shall carefully comply with this sailing instruction **15. SAFETY REGULATIONS**. Otherwise they can be requested to pay the expenses of search and rescue operations

16. SCORING

The total score of each boat will be the overall sum of its results in each race, will have no discard.

17. REPLACEMENT OF CREW. [DP]

Changes to crew list (adding new crew members, replacing or disembarking crew members) shall be made in writing to the Race Committee indicating the name and I.D. or Passport number of the substitute crew member and shall be lodged at the race office before 10:30 hours of each day, but in case of emergency, it can be communicated at the first reasonable opportunity, and in any case, within the protest time limit.

Only substitutions approved by the Race Committee will be accepted. Substitutes may be subject to weight control.

The substituted crew member shall not be aboard on any other competing boat throughout the remainder of the regatta.

18. OFFICIAL BOATS IDENTIFICATION.

- 18.1 The official boats will be identified by displaying flags as follows:

Race Committee	Colour Area flag
International Jury	White flag with a "J"
Technical Committee	White flag with a "M"
Media and Auxiliary	White flag with Press

19. SUPPORT BOATS. [NP][DP]

Support boats must be identifiable as to which the participating yacht they support. They shall stay outside of the safety zone (as defined in appendix 3) from the time of the preparatory signal for the first start until all boats have finished or the race committee signals a postponement, general recall or abandonment.

All support boats must register at the race office during the registration confirmation period.



20. HAUL-OUT RESTRICTIONS. [NP][DP]

Boats shall not be hauled out after 18.00h of the previous day of the first warning signal, except with and according to the terms of prior written authorisation of the race committee.

21. TRASH DISPOSAL..[DP]

Boats shall not put trash in the water. Trash may be placed aboard support boats and then disposed in the containers on land.

22. PRIZES.

The prize list will be posted on the Official Notice Board (ONB).

23. DISCLAIMER OF LIABILITY.

All those taking part in the regatta do so at their own risk and responsibility. See RRS 3 Decision to Race.

The organizing authority and all parties involved with the organization of the event will not accept any liability for material damage or personal injury or death sustained in conjunction with or prior to, during, or after the regatta.

24 LOCAL MARINE REGULATIONS [NP]

The Real Decreto 62/2008 states the conditions of maritime safety, navigation and life at sea applicable to nautical sports events.

Competitors are alerted that boats can only participate if they are dispatched in accordance with the administrative regulations for navigating the waters where the race will be sailed.

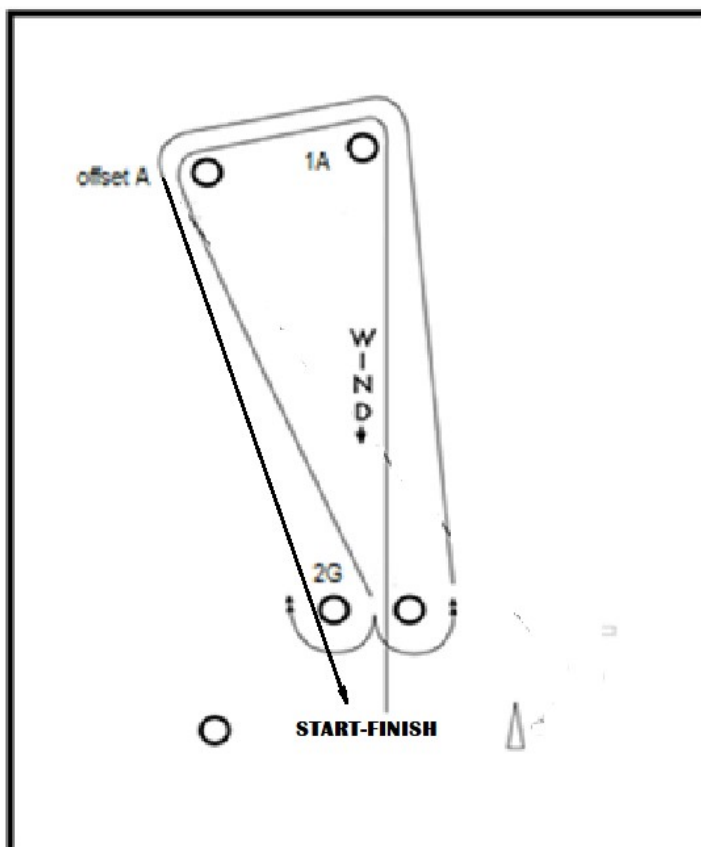
Competitors must declare, with adequate prior to the beginning of the event, the insurances subscribed to participating in nautical sports events, including the risks covered and the liability limits as required in the Notice of Race.

The Real Club Nautico de Palma informs all participants that it holds a third party liability insurance policy of 6.000.000 euros. It is each boat's responsibility to be in possession of the complementary insurances it deems convenient.



APPENDIX 1. WINDWARD/LEEWARD COURSES

Start – 1A – Offset A – 2G – 1 A– Offset A – Finish.



- Except at a Gate all course marks shall be left to port. When at the gate there is only one mark this one shall be rounded to port (SI 6.2).
- Distance between Race Committee and mark 1A and 1B: see S.I.6.5.
- Distance between starting line and gate: 0.2 Nm approx.
- Distance between mark 1A and mark offset A : 0.1 Nm approx.
- Angle between mark 1A and mark offset A : 100°
- Distance between gate marks: 10 boat lengths.
- Distance between committee boat and finishing mark: 150 m approx.
- The bearing to the windward mark and right side of the gate (when looking from leeward to windward) will be considered from Race Committee.

Note: This drawing is a schematic. The distances and mark positions are not to scale. This information is approximate. A different distance of the leg or bearing shall not be grounds for a request for redress.

APPENDIX 2. COASTAL COURSES.

At least 20 minutes before the warning signal, the Race Committee will announce by WhatsApp Group (See S.I. 2.1), the course to be sailed, the order in which marks are to be passed or rounded and the side they must be left to. The marks to be used will be the ones described in the following table. This information can be made by VHF Channel. A failure in the emission or reception of this publication will not be grounds for redress. (This changes RRS 62.1. (a)).

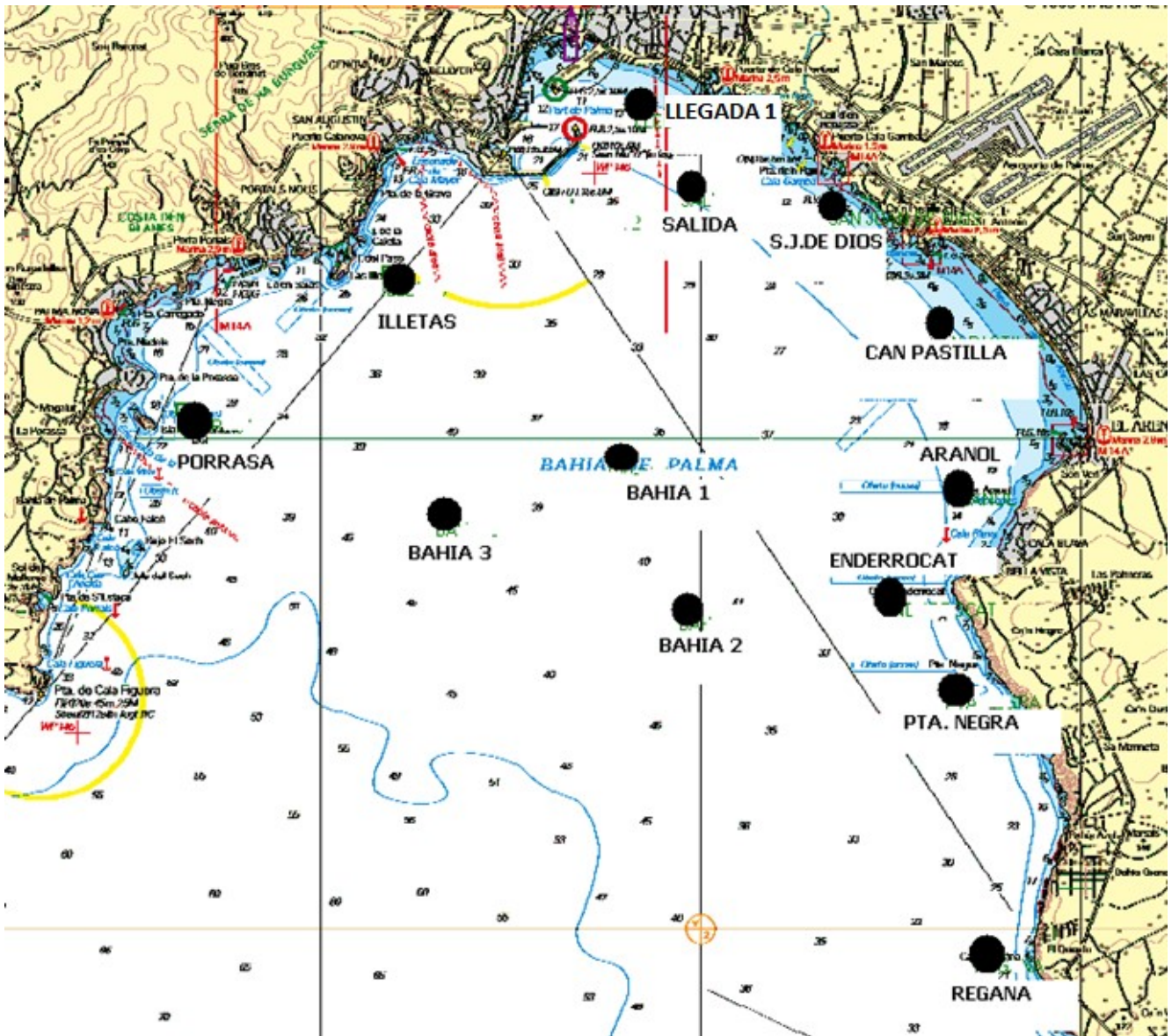
MARK INFORMATION

MARK	DESCRIPTION	APPROXIMATE POSITION
Offset mark	Inflatable Orange Mark	Distance and Bearing from Race Committee
Enderrocat	Inflatable Yellow Mark	39° 28,426 N/002° 42,457 E
Pta Aranol	Inflatable Yellow Mark	39° 29,549 N/002° 43,326 E
Pta Negra	Inflatable Yellow Mark	39° 27,482 N/002° 43,296 E
Regana	Inflatable Yellow Mark	39° 24,790 N/002° 43,677 E
S. Juan de Dios	Metalic Yellow Mark	39° 32,406 N/002° 41,763 E
Can Pastilla	Inflatable Yellow Mark	39° 31,132 N/002° 43,084 E
Bahía 1	Inflatable Yellow Mark	39° 29,805 N/002° 38,868 E
Bahía 2	Inflatable Yellow Mark	39° 28,275 N/002° 39,800 E
Bahía 3	Inflatable Yellow Mark	39° 29,235 N/002° 36,591 E
Porrassa	Inflatable Yellow Mark	39° 30,281 N/002° 33,180 E
Illetas	Inflatable Yellow Mark	39° 31,689 N/002° 35,881 E
Sech Island	Island	39° 28,602 N/002° 32,421 E aprox.
Finish 1	Comité y Boyarín	39° 33,329 N/002° 39,587 E
Finish 2	Comité y Boyarín	See course to be sailed description

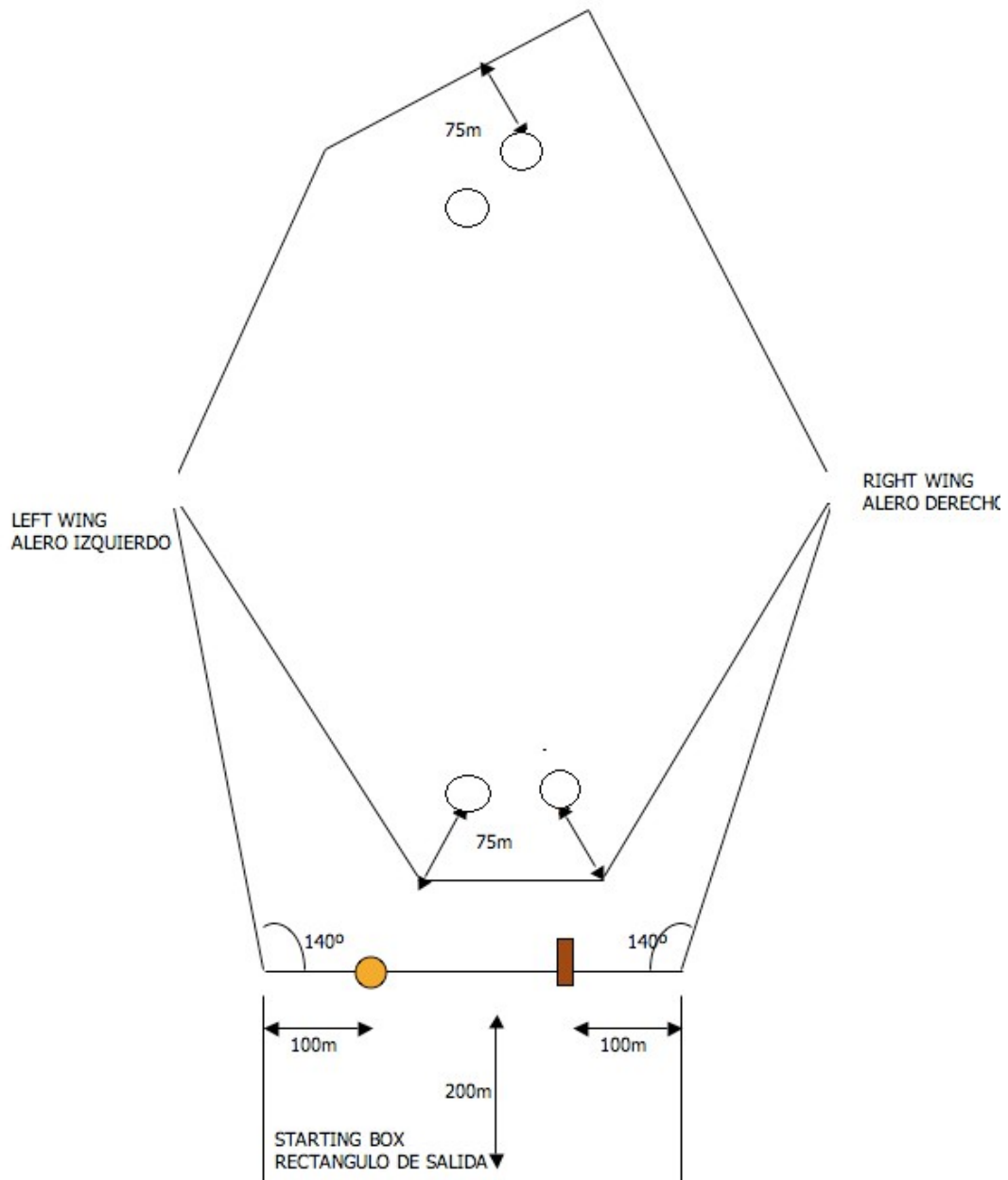
FINISH LINE 1 will be in the position indicated in the diagram.

FINISH LINE 2 will be in the position of any of the marks described in the diagram and will be defined in the course to be sailed.

APPENDIX 2. COASTAL COURSES.



APPENDIX 3. SAFETY ZONE



APPENDIX 4. ENTRANCE AND EXIT OF THE PORT OF PALMA

To enter and exit the port of Palma and with the intention to not interfere with the commercial traffic, the Palma Pilots, have requested the participants their maximum collaboration and attention.

For this purpose an entrance and exit channel has been established for all the participants, (see diagram).

We kindly request you not to interfere with the commercial ferry traffic whilst hoisting and/or lowering the sails, remaining clear ahead from the entrance/exit of the port.

We also inform you that the entrance and exit channel will be surveyed by organization and pilot Boats. Please follow their instructions.

