



CAMPEONATO DE EUROPA J80

EUROPEAN J80 CHAMPIONSHIP

EUROPAKO J80 TXAPELKETA

DEL 24 AL 28 DE JUNIO | GETXO

FROM JUNE 24TH TO 28TH | GETXO

EKAINAREN 24-TIK 28-RA | GETXO



SAILING INSTRUCTIONS

The notation [NP] in a rule means that a breach of that rule shall not be grounds for protests by a boat, and in such a case, the International Jury may refuse to hold a hearing. This changes RRS 60.1 and 63.2(a).

The notation [SP] in a rule means that a standard penalty for a breach of the rule may be applied by the race committee or technical committee without a hearing, or a discretionary penalty may be applied by the jury with a hearing. This changes RRS A5.

1. RULES

- 1.1 The event is governed by the rules as defined in the Racing Rules of Sailing and those other rules listed in the NoR 1 Rules.
- 1.2 Change RRS 41 by adding:
 - (e) Assistance in recovering a crew member from the water and bringing them back on board, provided that re-embarkation takes place in the vicinity of the location where the recovery occurred.
- 1.3 RRS 31 is changed to read:

31 TOUCHING A MARK

While *racing*, neither the crew nor any part of a boat's hull shall touch a starting *mark* before *starting*, a *mark* that begins, bounds or ends the leg of the course on which she is sailing, or a finishing *mark* after *finishing*. In addition, while *racing*, a boat shall not touch a race committee vessel that is also a *mark*.

- 1.4 RRS Appendix T applies.

2. CHANGES TO THE SAILING INSTRUCTIONS

- 2.1 Any change to the sailing instructions will be posted on the [ONB](#) before 10.00 on the day it will take effect, except that any change to the schedule of races will be posted by 21.00 on the day before it will take effect.

3. COMUNICATION WITH COMPETITORS

- 3.1 Notices to competitors will be posted on the official notice board located at ONB.
- 3.2 The race office is located at the Sailing School of the Real Club Marítimo del Abra – Real Sporting Club.
- 3.3 On the water, the race committee intends to monitor and communicate with competitors on VHF radio channel 72.

4. CODE OF CONDUCT [DP]

- 4.1 Competitors and support persons shall comply with reasonable requests from race officials.

PATROCINADOR:



INSTITUCIONES:



ORGANIZADOR:



COLABORADORES:





CAMPEONATO DE EUROPA J80

EUROPEAN J80 CHAMPIONSHIP

EUROPAKO J80 TXAPELKETA

DEL 24 AL 28 DE JUNIO | GETXO

FROM JUNE 24TH TO 28TH | GETXO

EKAINAREN 24-TIK 28-RA | GETXO



- 4.2 Competitors and support persons shall handle any equipment and place advertising provided by the organizing authority with care, seamanship, in accordance with any instructions for its use and without interfering with its functionality.

5. SIGNALS MADE ASHORE

- 5.1 Signals made ashore will be displayed at the main flagpole located next to the Sailors Tent between 09.00 and 21.00 hrs.
- 5.2 When flag AP is displayed ashore, '1 minute' is replaced with 'not less than 60 minutes' in Race Signals AP. (This changes Race Signal AP)

6. SCHEDULE OF RACES

- 6.1 The scheduled time of the warning signal for the first race each day is 12:00h.
- 6.2 On the last scheduled day of racing no warning signal will be made after 15.00hrs.
- 6.3 To alert boats that a race or sequence of races will begin soon, the orange starting line flag will be displayed with one sound at least five minutes before a warning signal is made.
- 6.4 A daily meeting will be hold every morning at 10:00h on the tent.

7. CLASS FLAG

- 7.1 The class flag is white with the class logo.

8. RACING AREA

- 8.1 SI Addendum 1 shows the location of the racing area.
- 8.2 Sailing area is defined as a Surface of a polygon whose edge exceeds 50 m the theoretical shortest course that can be done by a boat racing.
- 8.3 the Starting finishing area is defined as a rectangle of a surface of 50 m to windward and leeward of the starting and finishing line and 50 m to each side of this lines.

9. COURSE

- 9.1 SI Addendum 2 shows the diagram of the course including the order in which marks are to be passed, and the side on which each mark is to be left.
- 9.2 If a gate mark is missing and has not been replaced with an object displaying flag M, the remaining mark shall be rounded to port.
- 9.3 No later than the warning signal, the race committee signal vessel will display the approximate compass bearing of the first leg on a board or will broadcast it by VHF72. Failure to broadcast or receive the VHF message shall not be grounds to request redress. (This changes RRS 61.1)

10. MARKS

- 10.1 Marks will be:

PATROCINADOR:



INSTITUCIONES:



ORGANIZADOR:



COLABORADORES:





CAMPEONATO DE EUROPA J80

EUROPEAN J80 CHAMPIONSHIP

EUROPAKO J80 TXAPELKETA

DEL 24 AL 28 DE JUNIO | GETXO

FROM JUNE 24TH TO 28TH | GETXO

EKAINAREN 24-TIK 28-RA | GETXO



Starting Line Marks:	Race committee vessel on both ends of the line or, race committee vessel on the starboard end and orange inflatable mark on the port end.
Finishing Line Marks:	Race committee vessel on the starboard end and blue inflatable mark on the port end.
Marks 1, 1a (Offset) and 2s/2P (Gate):	Red inflatable marks.
New Mark (IR 12):	Yellow inflatable mark.

11. THE START

- 11.1 The starting line is between staffs displaying orange flags on the starting marks or between a staff displaying an orange flag on the race committee signal vessel at the starboard end and the course side of the port-end starting mark.
- 11.2 In addition to the signals required by RRS 29.1 and 29.2, the race committee may broadcast the General and Individual recalls on VHF72. A boat may not request redress based on the race committee's failure to make a broadcast or to time it accurately. This changes RRS 61.1(a).
- 11.3 A boat that does not start within 4 minutes after her starting signal will be scored Did Not Start (DNS) without a hearing. This changes RRS 35 and A5.

12. CHANGE OF THE NEXT LEG OF THE COURSE

- 12.1 To change the next leg of the course, the race committee will lay a new mark (or move the finishing line) and remove the original mark as soon as practicable. When in a subsequent change a new mark is replaced, it will be replaced by an original mark.
- 12.2 Except at a gate, boats shall pass between the RC boat signalling the change of the next leg and the nearby mark, leaving the mark to port and the RC boat to starboard. This changes RRS 28.1.
- 12.3 When Mark 1 is changed, Mark 1a (offset) is no longer a mark of the course. It will be removed as soon as practicable. This changes RRS 33.

13. THE FINISH

- 13.1 The finishing line is between a staff displaying a blue flag on the finishing mark at the starboard end and the course side of the port end finishing mark.

14. PENALTY SYSTEM

- 14.1 RRS 44.1 is changed so that the Two-Turns Penalty is replaced by the One-Turn Penalty.
- 14.2 RRS Appendix P applies with the following changes:
- 14.2.1 RRS P1.2 is changed as follows:
- P1.2 If an observer appointed under rule P1.1 decides that a boat has broken rule 42 or J80 Class Rules J80 C.6.2(a) (crew position at roll tacks) or C.8.3(b) (bowsprit), the boat may be penalized by, as soon as reasonably possible making a sound signal, pointing a yellow flag at her, and clearly identifying her by hailing, even if she is no longer racing. A boat so penalized shall not be penalized a second time under the same rule for the same incident.

PATROCINADOR:



INSTITUCIONES:



ORGANIZADOR:



COLABORADORES:





CAMPEONATO DE EUROPA J80

EUROPEAN J80 CHAMPIONSHIP

EUROPAKO J80 TXAPELKETA

DEL 24 AL 28 DE JUNIO | GETXO

FROM JUNE 24TH TO 28TH | GETXO

EKAINAREN 24-TIK 28-RA | GETXO



14.2.2 RRS P2.1 is changed as follows:

P2.1 Penalties

When a boat is penalized under rule P1.2 her penalty shall be a One-Turn Penalty under rule 44.2. If she fails to take it she shall be disqualified without a hearing.

14.2.3 RRS P2.2 and P2.3 do not apply.

14.3 The Umpire Observation System described in SI Addendum 3 will apply.

16.4 A party to a protest hearing may request an arbitration meeting under RRS Appendix T no later than 15 minutes before the scheduled hearing time for her case. The arbitration meeting will be held provided all parties agree and attend the meeting.

15. TIME LIMITS AND TARGET TIMES

15.1 The Target time, Mark 1 Time Limit, Race Time Limit (see RRS 35), and the Finishing Window are shown in the table below.

Target Time	Mark 1 Time Limit	Race Time Limit	Finishing Window after the 1 ^o
50 min.	25 min.	75 min.	15 min.

15.2 If no boat has passed the first mark within the Mark 1 Time Limit, the race will be abandoned.

15.3 The Finishing Window is the time for boats to finish after the first boat sails the course. Boats failing to sail the course within the Finishing Window, will be scored Did Not Finish (DNF) without a hearing. This changes RRS 35, A4, A5.1, and A5.2.

15.4 Failure to meet the Target Time will not be grounds for request redress. This changes RRS 61.

16. HEARING REQUESTS

16.1 Hearing request forms are available at the race office and shall be delivered there before the end of the applicable time limit.

16.2 The protest time limit for an incident observed in the racing area is 90 minutes after the last boat finishes the last race of the day or the race committee signals no more racing today, whichever is later. The time will be posted on the [official notice board](#).

16.3 Notices will be posted no later than 30 minutes after the protest time limit to inform competitors of hearings in which they are parties or named as witnesses. Hearings will be held in the protest room, located at "Potter" room on the Club House ground floor.

16.4 [NP]On Sunday 28th June, a boat shall not protest for an alleged breach of a measurement rule. This changes RRS 60.1.

16.5 A boat alleging an error in her score in the series or in a race may deliver a scoring review form in the race office. The International Jury will consider such a form as a request for redress provided it was delivered within the time limit stated in RRS 61.2(b). This changes RRS 61.1(a).

PATROCINADOR:



INSTITUCIONES:



ORGANIZADOR:



COLABORADORES:





CAMPEONATO DE EUROPA J80

EUROPEAN J80 CHAMPIONSHIP

EUROPAKO J80 TXAPELKETA

DEL 24 AL 28 DE JUNIO | GETXO

FROM JUNE 24TH TO 28TH | GETXO

EKAINAREN 24-TIK 28-RA | GETXO



17. SAFETY RULES [NP][DP]

- 17.1 A boat that retires from a race or leaves the racing area shall notify the RC at the first reasonable opportunity.
- 17.2 [DP] A Boat shall return to her assigned place in the harbour. If she is unable to do it, she shall notify the race office as soon as possible.
- 17.3 Participants are reminded that they must comply with all legal regulations for recreational boats, especially concerning their operation, equipment, and safety.
- 17.4 Royal Decree 62/2008 establishes the conditions for maritime safety, navigation, and human life at sea applicable to nautical-sporting events.

Prior to the start of the event, competitors are warned that boats may only participate if they are officially cleared to navigate the waters where the event will take place, and if their skippers hold the appropriate certification for their operation.

Participants shall declare, well in advance of the start of the event, the insurance policies layout, if applicable, including the covered risks and liability limits in accordance with the Notice of Race, ensuring they are covered for participation in nautical-sporting events.

18. REPLACEMENT OF CREW OR EQUIPMENT [DP]

- 18.1 Substitution of competitors is not allowed without prior written approval of the technical committee. Requests for substitution shall be made in writing at least two hours before the scheduled time of the warning signal for that race. In case of emergency, the change can be communicated to the race committee or the technical committee in the first reasonable opportunity.
- 18.2 Substitution of damaged or lost equipment is not allowed unless authorized in writing by the technical committee. Requests for substitution shall be made to the committee at the first reasonable opportunity, which may be after the race.

19. EQUIPMENT AND MEASUREMENT CHECKS.

- 19.1 A boat or equipment may be inspected at any time for compliance with the class rules, notice of race and sailing instructions. This includes crew weight checks.
- 19.2 [DP] When instructed by a race official on the water, a boat shall proceed to a designated area for inspection.
- 19.3 Addendum 4 states measurement instructions and procedures.

20. OFFICIAL VESSELS

- 20.1 Official vessels will be identified as follows:

Race Committee	White flag with letters CR
International Jury	White flag with letter J
Technical Committee	White flag with letter M

PATROCINADOR:



INSTITUCIONES:



ORGANIZADOR:



COLABORADORES:





CAMPEONATO DE EUROPA J80

EUROPEAN J80 CHAMPIONSHIP

EUROPAKO J80 TXAPELKETA

DEL 24 AL 28 DE JUNIO | GETXO

FROM JUNE 24TH TO 28TH | GETXO

EKAINAREN 24-TIK 28-RA | GETXO



21. HAUL-OUT RESTRICTIONS AND MOORING [NP] [DP]

- 21.1 Boats shall stay afloat and on their assigned moorings from 19.00 hrs on 24th June until the end of the last race. During this period, a boat shall not be hauled out except with and according to the terms of prior written permission of the technical committee.
- 21.2 In case of an emergency, the responsible for the boat shall try to reach the technical committee by any means. If the technical committee is not available, the authorisation can be issued afterwards.

22. RISK STATEMENT

- 22.1 All participants in this regatta do so entirely at their own risk and responsibility.
- 22.2 The organizing authority and all persons and institutions involved in the organization and the running of the event will not accept any liability for any loss, damage, personal injury or death sustained in conjunction with or prior to, during, or after the regatta both afloat or ashore occurred in relation to the event run under this Sailing Instructions.

RRS 3 Decision to Participate states:

«The responsibility for a boat's decision to participate in a race or to continue racing is hers alone ».

Getxo, June 2026

PATROCINADOR:



INSTITUCIONES:



ORGANIZADOR:



COLABORADORES:





CAMPEONATO DE EUROPA J80

EUROPEAN J80 CHAMPIONSHIP

EUROPAKO J80 TXAPELKETA

DEL 24 AL 28 DE JUNIO | GETXO

FROM JUNE 24TH TO 28TH | GETXO

EKAINAREN 24-TIK 28-RA | GETXO



ADDENDUM 1

Racing Area



PATROCINADOR:



INSTITUCIONES:



ORGANIZADOR:



COLABORADORES:





CAMPEONATO DE EUROPA J80

EUROPEAN J80 CHAMPIONSHIP

EUROPAKO J80 TXAPELKETA

DEL 24 AL 28 DE JUNIO | GETXO

FROM JUNE 24TH TO 28TH | GETXO

EKAINAREN 24-TIK 28-RA | GETXO

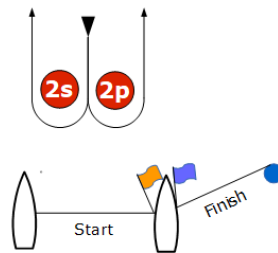
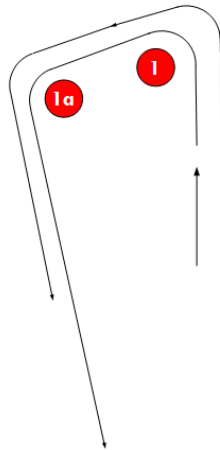


Addendum 2

Course

START – 1 – 1a (offset) – 2S/2P – 1 – 1a (offset) – FINISH

Marks 1, 1a (offset) and 2P will be rounded/left to port. Mark 2S will be rounded/left to starboard.



PATROCINADOR:



INSTITUCIONES:



Real Federación Española de Vela



ORGANIZADOR:



COLABORADORES:





CAMPEONATO DE EUROPA J80

EUROPEAN J80 CHAMPIONSHIP

EUROPAKO J80 TXAPELKETA

DEL 24 AL 28 DE JUNIO | GETXO

FROM JUNE 24TH TO 28TH | GETXO

EKAINAREN 24-TIK 28-RA | GETXO



ADDENDUM 3

Umpire Observation

- A3.1 Umpires may observe the racing and provide advisory umpire signals. If an umpire observes an incident where a boat protests, one of the following signals may be made:
- (a) A green and white flag with one long sound means 'The umpires saw the incident and believe that no rule was broken'.
 - (b) A red flag with one long sound means 'The umpires saw the incident and believe that one or more boat has broken a rule'. The umpires will hail or signal each boat identified to have broken a rule.
 - (c) A "J" flag with one long sound means 'The umpires do not have the facts to make a decision'. A3.2 The signals displayed by the umpires are for information only. A boat identified by a red flag is not required to take the applicable penalty. However, if she does not do so, an umpire may protest her on behalf of the Protest Committee.
- If a green-and-white flag or Code Flag "J" is displayed, the protesting boat may still request a hearing, or she may choose to take the applicable penalty.
- A3.2 The signals displayed by the umpires are for information only. If a red flag is displayed, any identified boat is not obliged to take the applicable penalty, however if she does not, the Umpire, as part of the protest committee, may protest that boat. If a green and white flag or the "J" flag is displayed, a boat may still protest, or a boat may choose to take the applicable penalty.
- A3.3 If a green and white flag is displayed for an incident, the protest committee will only protest a boat for an incident involving her that may have resulted in injury or serious damage, or if the protest committee learns during the hearing of a valid protest that the boat, although not a party to the hearing, was involved in the incident and may have broken a rule. This changes RRS 60.1 and 60.4(b).

PATROCINADOR:



INSTITUCIONES:



Real Federación Española de Vela



ORGANIZADOR:



COLABORADORES:





CAMPEONATO DE EUROPA J80

EUROPEAN J80 CHAMPIONSHIP

EUROPAKO J80 TXAPELKETA

DEL 24 AL 28 DE JUNIO | GETXO

FROM JUNE 24TH TO 28TH | GETXO

EKAINAREN 24-TIK 28-RA | GETXO

Patrocina /
Sponsor /
Babeslea:



Organizador / Organizer / Antolatzailea:



Instituciones / Institutions / Erakundeak:



Getxo



Colaboradores / Kolaboratzaileak / Collaborators:



ADDENDUM 4 [DP]

MEASUREMENT

CHECKS

- Crew weigh-in. According with the rule C.4.1., the maximum crew weight in swimming apparel is 350kg with no limit on numbers of crew. Weigh-in conducted during registration, or prior to the first race, satisfies this requirement for the duration of the event, unless specified otherwise in the Notice of Race. No protests will be permitted. Registration for the regatta will only be valid once this requirement has been met.
- Sails. According with rule C.10.1., no more than one mainsail, one headsail, and one gennaker may be used during the event, except if the sail has been damaged to the point of being unusable. A declaration must be made before any change. All sails must be presented to the event's Technical Committee to ensure they are certified with the correct sticker.
- Mandatory equipment is defined in Rule C.5.
- During the registration phase, sail checks, crew weight checks, and boat weight checks will be carried out.

PATROCINADOR:



INSTITUCIONES:



Real Federación
Española de Vela

Bizkaïtar Aitzoial Bazkuna
Federación Vizcaína de Vela



ORGANIZADOR:



COLABORADORES:

